



FINPARK

NEWSLETTER

Vol 5
Issue 3
September 2022

A NEWSLETTER FOR NATURE LOVERS



Contents

CLIMATE CHANGE - 01
WHAT WE DO AT FINIMA NATURE PARK -03
ECOTOURISM - 05
REFORESTATION EFFORTS - 06
BIRD EXPEDITION- 07
WORLD OZONE DAY - 08
WORLD WETLANDS DAY 2022 - 08
DYK - 09
BRAINTEASER - 12
UP NEXT - 13

FINPARK

FINPARK NEWSLETTER

- PHONE NO: 08061154038
- EMAIL: finimanaturepark@gmail.com
- WEBSITE: www.finimanaturepark.com
- FACEBOOK: [Finima.Park](#)
- INSTAGRAM: [@finimanaturepark](#)
- TWITTER: [@finimanatureprk](#)

NEWS LETTER CONTRIBUTORS:

Asoegwu Chisom Racheal
Usman Shittu
Kogbo Pepple

EDITORS

Dagogo Brown
Solomon Adefolu

DESIGNER

Yusuf Bello

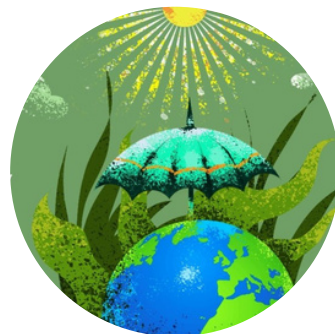
SEPTEMBER 2022 | VOL. 5 ISSUE 3

THE OFFICIAL NEWSLETTER OF FINIMA NATURE PARK

CLIMATE CHANGE

Climate change refers to long-term shifts in temperatures and weather patterns. These shifts may be natural, such as through variations in the solar cycle. But since the 1800s, human activities have been the main driver of climate change, primarily due to burning fossil fuels like coal, oil, and gas. Burning fossil fuels generates greenhouse gas emissions that act like a blanket wrapped around the Earth, trapping the sun's heat and raising temperatures. Examples of greenhouse gas emissions that are causing climate change include carbon dioxide and methane. These come from using gasoline for driving a car or coal for heating a building, for example. Clearing land and forests can also release carbon dioxide.

Landfills for garbage are a major source of methane emissions. Energy, industry, transport, buildings, agriculture and land use are among the main emitters. You don't need to be a climate scientist to talk about the risks climate change poses to human health, or the health benefits of taking action on climate change.



CLIMATE CHANGE

95 percent of Scientists agree that:

- climate change is happening now
- It is primarily driven by human activity
- We can do something to reduce its impact and progressions

Climate change is causing five critical global environmental changes

Warming temperature of the earth's surface and the oceans: The earth has warmed at a rate of 0.13° C per decade since 1957, almost twice as fast as its rate of warming during the previous century.

• **Changes in the global water cycle ('hydrologic' cycle):** Over the past century there have been distinct geographical changes in total annual precipitation, with some areas experiencing severe and long-term drought and others experiencing increased annual precipitation. The frequency and intensity of storms increase as the atmosphere warms and is able to hold more water vapor.

• **Declining glaciers and snowpack:** Across the globe, nearly all glaciers are decreasing in area, volume and mass. • **Sea level rise:** Warmer water expands, so as oceans warm the increased volume of water is causing.

• **Sea level rise.** Melting glaciers and snowpack also contribute to rising sea levels

• **Ocean acidification:** Oceans absorb about 25% of emitted CO₂ from the atmosphere, leading to acidification of seawater.

There is a lot we can do about climate change: In general, climate solutions fall into two big buckets — “mitigation” and “adaptation.” Increasingly, government and community organizations also talk about measures to increase climate “resilience.” These concepts are not distinct, and are all interrelated. From the Global Change Research Project:9

• **Mitigation** refers to “measures to reduce the amount and speed of future climate change by reducing emissions of heat-trapping gases or removing carbon dioxide from the atmosphere.”



"Working with a team teaches you to be more accepting of others." - Marshall Albert, fifth grader





- Adaptation refers to measures taken to reduce the harmful impacts of climate change or take advantage of any beneficial opportunities through “adjustments in natural or human systems.”

- Resilience means the “capability to anticipate, prepare for, respond to, and recover from significant threats with minimum damage to social well-being, the economy, and the environment.”

Finima Nature Park in collaboration with Nigeria LNG clearly has a responsibility to maintain and that is to implement and adopt climate-friendly practices through the adoption of renewable and cleaner energy. However, these practices do not have to be at odds with business goals. In fact, policies on climate change align with an international goal on climate change. As the human population increases so too do our energy use, leading to more polluted environments and depleted natural resources. But, that doesn’t mean businesses can’t be successful and sustainable. Some growth works in step with sustainability. Renewable energy companies represent a source of new jobs. Using less energy and plastic in production represents an opportunity to grow profit margins.



"Working with a team teaches you to be more accepting of others." - Marshall Albert, fifth grader



WHAT WE DO AT FINIMA NATURE PARK

www.finimanatureark.com



School Visits

In the last quarter, 51 schools were visited by Finima Nature Park. FNP has continually embarked on sensitization to different school to educate the students and pupils on the need to carryout safe environmental friendly practices. There have also been recorded successes on different projects being carried out at schools such as tree planting, recycling of plastic waste and making craft using noncombustible waste.



Social Groups

Social groups form a major part of socialization and acculturation therefore Finima Nature makes periodic visits to social clubs to create awareness on environmental sustainability



Church Visits

Finima Nature Park makes regular visits to religious places of worship where sensitization and awareness is also carried out on the need to protect and sustain our ecosystem. There have been recorded successes in about 22 churches that have been visited in the last quarter.

ECOTOURISM

ECOTOURISM

Individuals, families, and friends visited the Park during this month while ensuring compliance to Covid-19 guidelines. Notable was the visit of Nigerian Legendary Singer/Human right activists, Onyeka Onwenu. The visitors went on a nature walk, boat ride and played the floor games and had lots of fun.



*"Move forward.
Good things are
up ahead."*

REFORESTATION EFFORTS



To increase the survival rate of the coconuts planted at the seacoast, the officers continued to use bamboo to protect them.

REFORESTATION

Written by Shittu

Anti-poaching patrols round the perimeter of the park were carried out regularly this month to wade off any poaching activities. No poachers or loggers were seen during the patrols.



FINPARK

FOLLOW OUR SOCIAL MEDIA

@FINIMANATUREPARK @FINIMANATUREPAK @FINIMA.PARK



FINIMA NATURE PARK

BIRD EXPEDITION



RECREATIONAL ACTIVITY

Finima Nature Park has lots of recreational activities like the Snake and the Ladder game, Ludo game and Chess game all domiciled within the park to keep tourists entertained. Also, a lake sighted at the resource center to tour visitors using a canoe after walk. It also has the children play ground where children go to have fun moment.

BIRD EXPEDITION

Finima Nature Park bird watch club held their bird watching outing for the quarter, different bird species which included African jacana, giant king fisher, Cattle egret, Ethiopian swallow, Great egret, Woolly Neck stock, among others were cited and recorded.



FINPARK NEWSLETTER

FOLLOW OUR SOCIAL MEDIA

@FINIMANATUREPARK @FINIMANATUREPAK @FINIMA.PARK

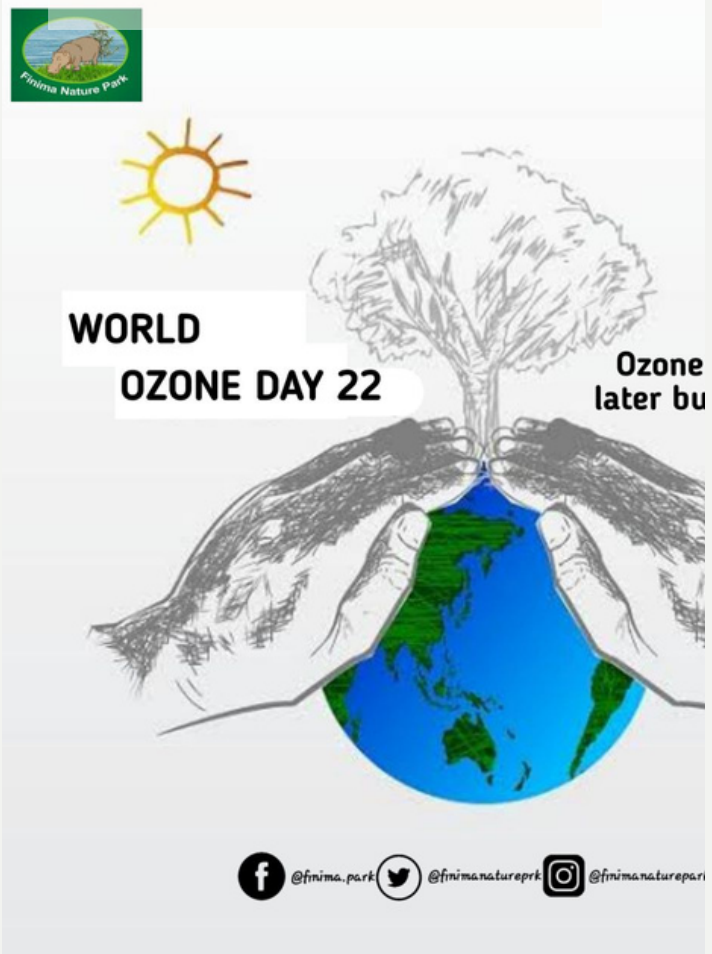
World Ozone Day

By Chisom

Every year, 16th September is observed as the International Day for the Preservation of the Ozone layer (World Ozone Day) to commemorate the signing of the Montreal Protocol. The key highlights for the 2022 World Ozone Day at Finima Nature Park involved calls for adoption of policies that is in line with the concept of sustainable lifestyle,

WHAT'S IN THIS MONTH'S ISSUE:

- World Ozone day 2022
- Upcoming Events



picture from world Ozone day 2022 commemoration



picture from world Ozone day 2022 commemoration

encouraging us to adopt mindful and not mindless consumption and utilization of resources, collaborating with schools to create awareness and promote research. In a joint collaboration with Nigeria LNG, FNP is tasked with the responsibility of adopting climate-friendly alternatives and promotion of energy efficiency in adopting cleaner and renewable forms of energy.

DYK



DYK

Nature equals one-third of the solution : Protecting and restoring natural ecosystem, such as old-growth forest, could provide a third of the global action needed to avoid the worst impact of climate change.

DYK

Written by kogbo

Natures medicine chest : Many disease-battling medicines sold world wide are derived directly from plants found in rainforests. From the cancer drug vincristine to quinine, which is used to treat malaria.



Visitors from NNPC

FOR MORE VISIT: www.finimanaturepark.com

DYK



DYK

Living filters :Forests are “living filters” for rivers and streams. Absorbing sediments and storing and transforming excess nutrients and pollutants. They reduce nitrogen and phosphorus concentrations by up to 99 percent.

DYK

Unmatched biodiversity : Tropical forest covers roughly 10 percent of Earth’s land mass but are home to at least half of all living species

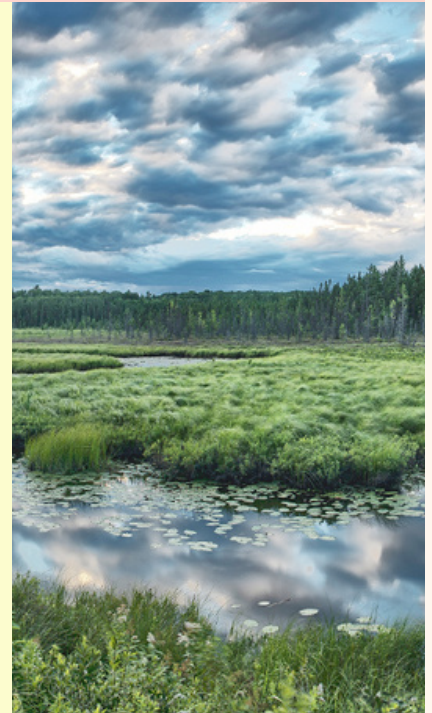
Populations in perspective: An estimated 350 million people around the world depend on forest for their livelihoods.



DO YOU KNOW?

DYK

Successful stewardship:
Indigenous people manage or have rights over about 40 percent of all terrestrial protected areas and ecologically intact landscapes. And their lands have lower rates of deforestation and fire than other protected areas.



DYK

Where in the world?
Five countries- Brazil, Canada, China, Russia, and the United States are home to more than half of the world's forests.

DYK

1 billion people:
More than 1 billion rural people depend on forests to some extent for food, and 252 million people who live in forests and savannas have incomes of less than \$1.25 per day.



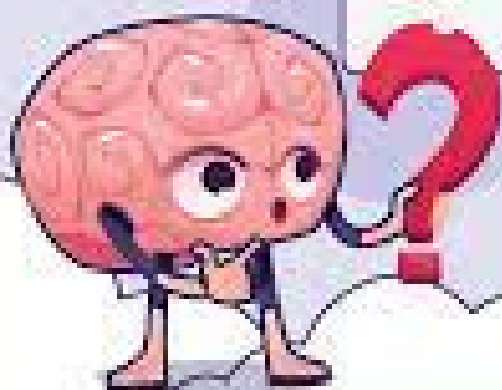
Forests growing younger:
Globally, forest are getting young and shorter as large, old trees die faster than they used to.

SEPTEMBER 2022

BRAIN TEASER

FINPARK NEWSLETTER

Top Brain Teasers to Test Your Intelligence



BRAIN TEASER

BY YUSUF BELLO

PUZZLE

Solve the puzzle

key

AQUIFIER | CLIMATE | COAL |
COMPOST | DEFORESTATION | NATURE
| ECOLOGY | EMISSION | ENERGY | SOIL |
DAY | MIGRATORY | ATMOSPHERE |
WORLD | OZONE | LAYER

L	W	E	R	E	N	E	R	G	Q	D	E	S	F	G	H	I	K	L	Q
A	B	L	I	F	S	A	D	P	E	N	E	R	G	Y	B	Z	D	J	O
Y	X	A	Q	U	I	F	E	R	I	O	W	O	R	L	I	G	J	A	Z
E	G	K	H	Q	W	R	F	L	X	C	M	Y	V	W	O	R	L	D	O
L	F	G	U	I	K	C	O	A	W	L	O	N	G	L	P	I	Y	A	N
A	Q	E	N	A	T	U	R	E	Z	C	N	A	U	R	E	D	G	T	Y
Y	Q	R	T	Y	I	P	E	B	F	E	L	T	L	T	D	H	H	M	O
E		U	A	V	D	F	S	O	I	L	T	U	G	J	K	D	A	O	Z
R	O	J	I	S	D	F	T	I	X	N	B	R	L	K	F	A	T	S	O
J	D	E	R	Y	I	L	A	K	H	E	C	O	L	O	G	Y	O	P	N
C	C	O	M	P	O	S	T	L	M	B	C	X	K		B	U	C	H	E
P	D	E	M	I	S	S	I	O	N	A	T	U	F	T	U	K	G	E	B
M	X	C	R	V	B	D	O		C	L	I	M	A	T	E	U	H	R	G
Q	C	L	I	M	E	B	N	T	M	I	G	R	A	T	O	R	Y	E	G

UP NEXT

FINPARK NEWSLETTER

- World Soil Day

December 5th

- End of The Year Activities

December

- Environmental Education

Continuous

- Reforestation

Continuous

- Bird Watch

1st Saturday of every month

SOCIAL PAGE STATS

Daily Views - 312+

Monthly Views - 1.4k+

Unique Views - 6.2k+

STATISTICS



5.5k+



2.5k+



3.8k+

